

BOXPLOTS - SOLUTIONS



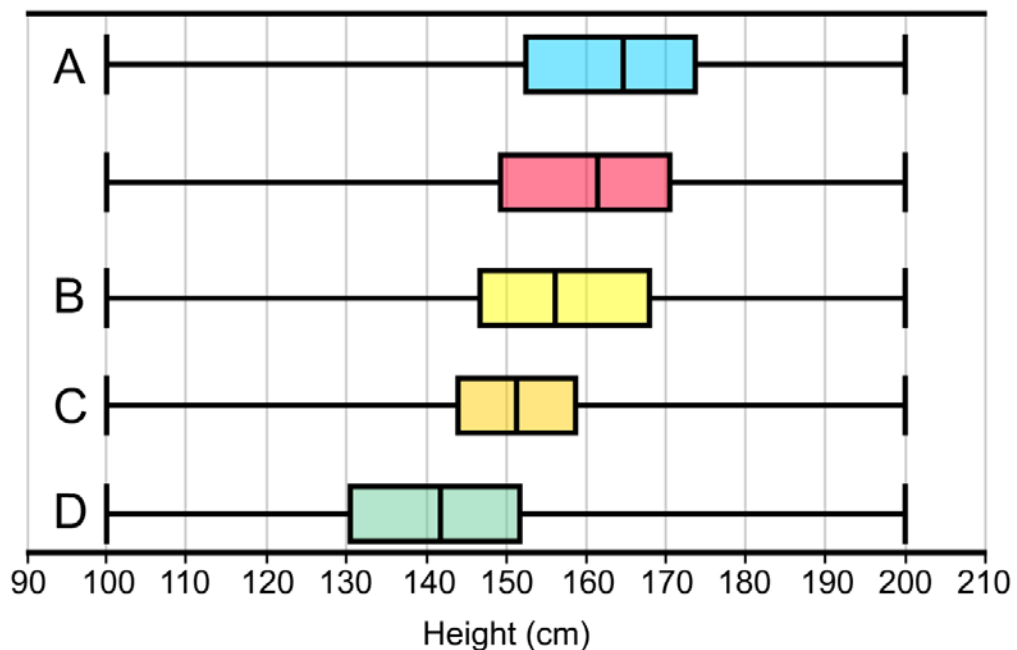
TASK A

1. Complete the following table by using information from the boxplots.

Boxplot Letter	Minimum	Q1	Median	Q3	Maximum	IQR	Range	Age Group
A	100cm	152cm	165cm	174cm	200cm	22cm	100cm	16
B	100cm	146cm	156cm	168cm	200cm	22cm	100cm	14
C	100cm	144cm	152cm	158cm	200cm	14cm	100cm	13
D	100cm	130cm	142cm	152cm	200cm	22cm	100cm	11

- The pupil should comment on their height compared to the median of the South African learners for their age group.
- How would a boxplot for 15-year-old South African learners look?
-
-

Heights of different ages of South African Learners

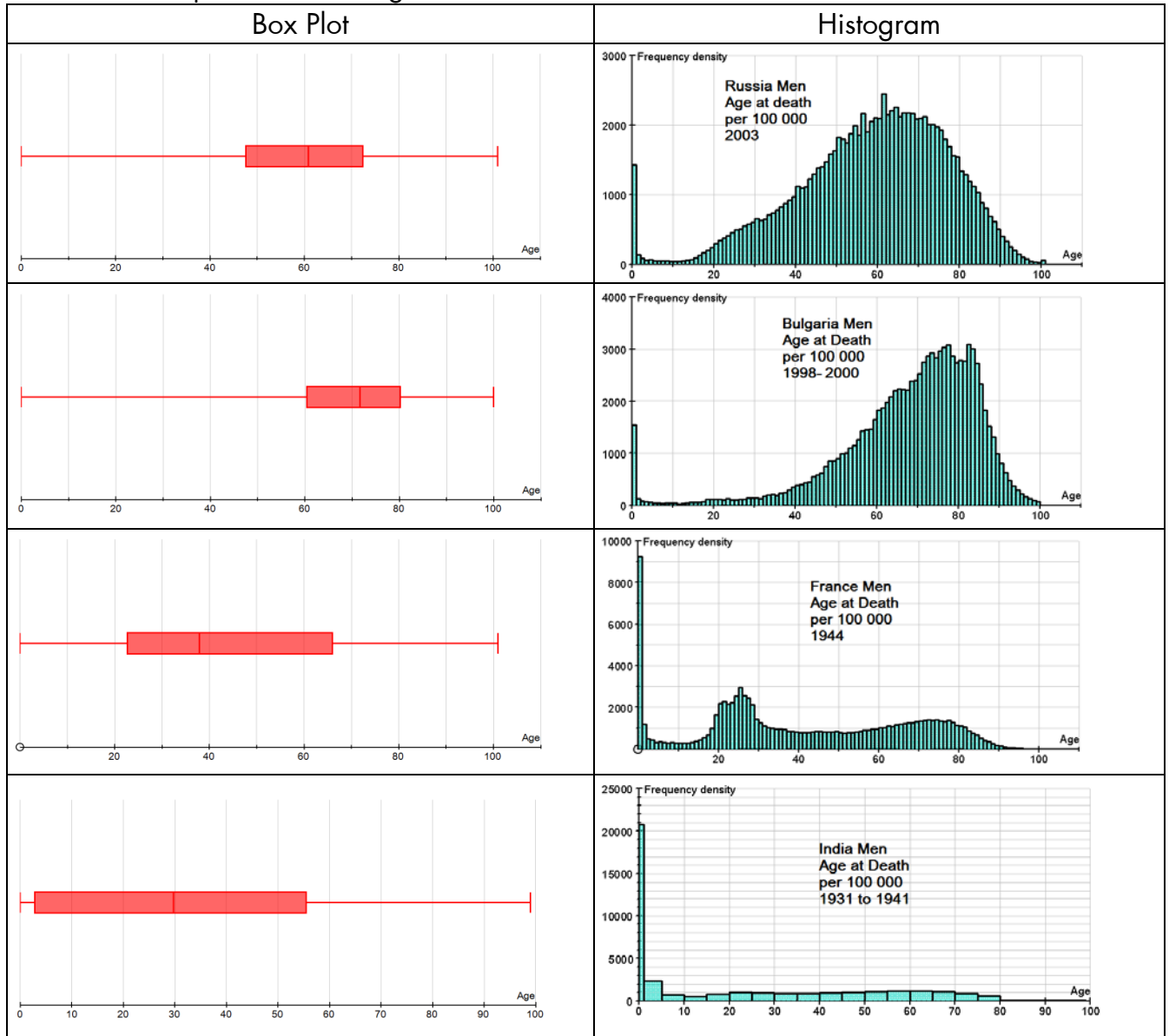


BOXPLOTS - SOLUTIONS



TASK B

Match the boxplots to the histograms which show the same distributions.



2. Pupils should comment on the when the data was taken and explore possible causes for the deaths, such as poor medical facilities, poverty, climate, hygiene, the years the data was taken.

BOXPLOTS - SOLUTIONS



3. Why do you think that there is a peak in the France data between the ages of 20 to 30?
The year of the data comes from is 1944, so many people in this age group would have been soldiers that died during World War II.